

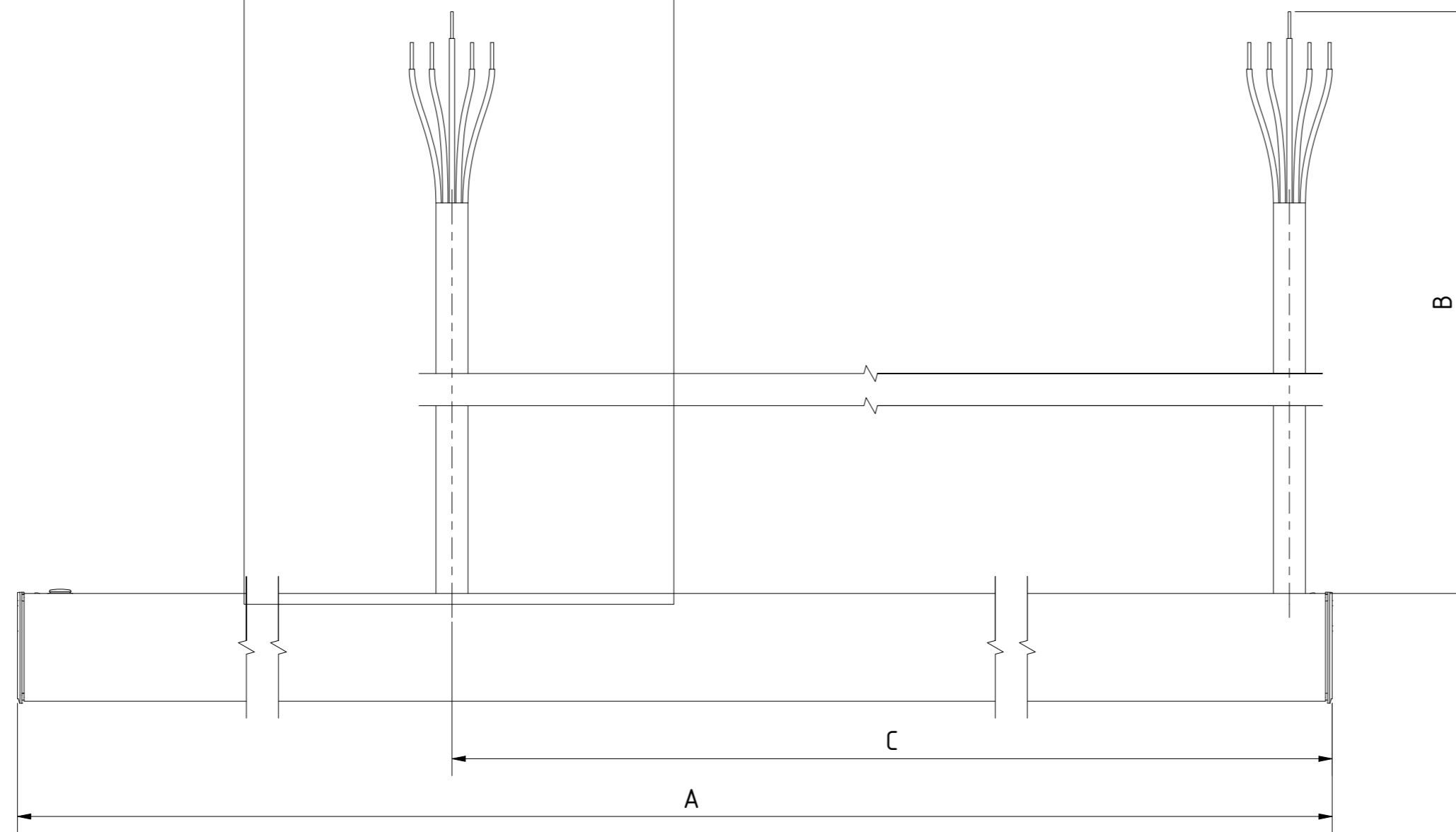
REDA

Drw. No.
 VXxxxxx

HUOM!
 Pituus (B) on maksimimitta jonka kullakin kaapelilla voi saavuttaa.
 On suositeltavaa jättää tarvittava pelivara asennuksille (esim. jos kaapelia täytyy taivutella, kiertää esteitä tms.)

ATTENTION!
 Length (B) is the absolut maximum wiring distance. It is advised to leave some leeway for assembling (e.g. if the cable needs to be bend etc.)

Vaihtoehto: vain:
 Optional: only for:
 W110, W90, W60, N30, A2 & A1



I1W Cable 1m		
LUMINAIRE (A)	CABLE (B)	DIMENSION (C)
1500 (15S)	950	750
1390 (15C)	950	695
1690 (18C)	950	845
1890 (20C)	950	945

I2W / I2 Cable 2m		
LUMINAIRE (A)	CABLE (B)	DIMENSION (C)
1500 (15S)	1950	750
1390 (15C)	1950	695
1690 (18C)	1950	845
1890 (20C)	1950	945

I3W Cable 3m		
LUMINAIRE (A)	CABLE (B)	DIMENSION (C)
1500 (15S)	2950	750
1390 (15C)	2950	695
1690 (18C)	2950	845
1890 (20C)	2950	945

I4W / I4 Cable 4m		
LUMINAIRE (A)	CABLE (B)	DIMENSION (C)
1500 (15S)	3950	750
1390 (15C)	3950	695
1690 (18C)	3950	845
1890 (20C)	3950	945

I5W Cable 5m		
LUMINAIRE (A)	CABLE (B)	DIMENSION (C)
1500 (15S)	4950	750
1390 (15C)	4950	695
1690 (18C)	4950	845
1890 (20C)	4950	945

I6W / I6 Cable 6m		
LUMINAIRE (A)	CABLE (B)	DIMENSION (C)
1500 (15S)	5950	750
1390 (15C)	5950	695
1690 (18C)	5950	845
1890 (20C)	5950	945

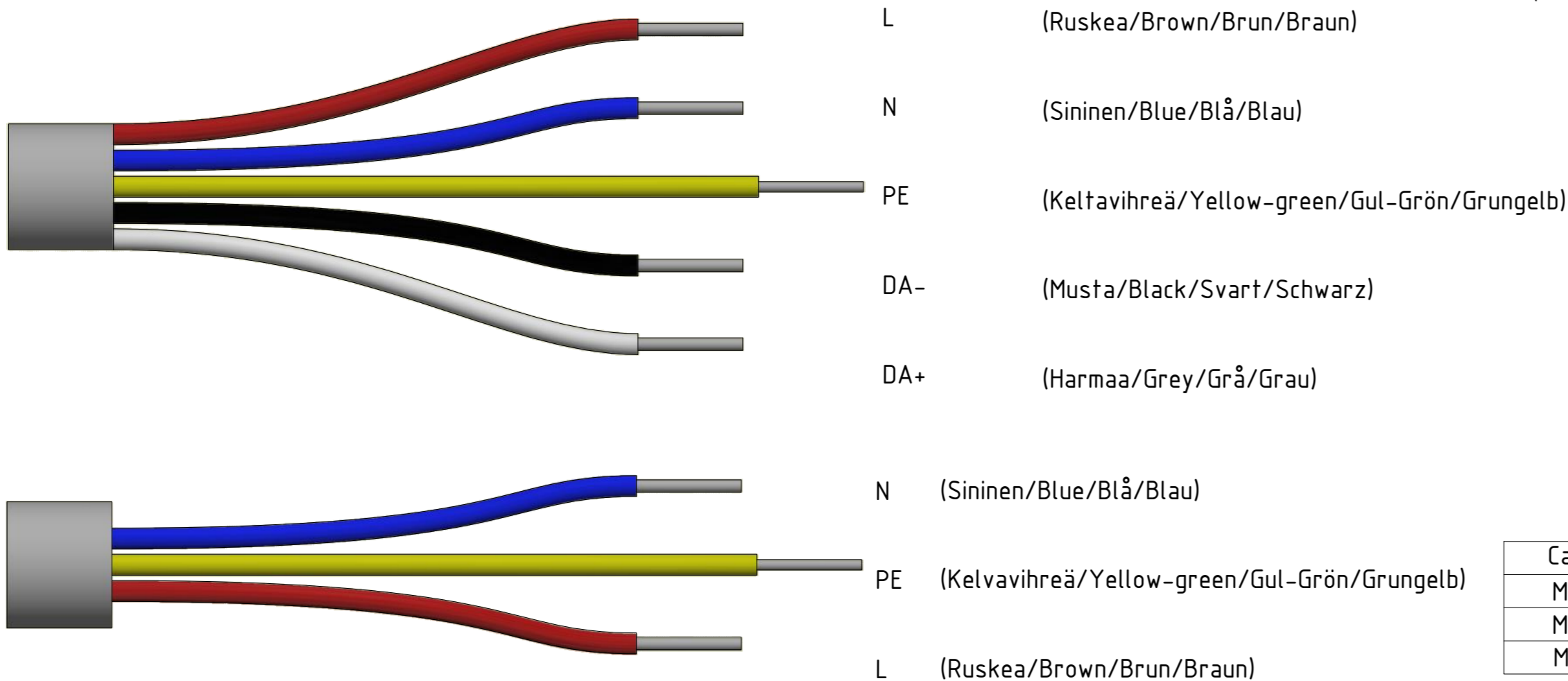
I8W Cable 8m		
LUMINAIRE (A)	CABLE (B)	DIMENSION (C)
1500 (15S)	7950	750
1390 (15C)	7950	695
1690 (18C)	7950	845
1890 (20C)	7950	945

WAGO WINSTA MIDI Cables		WAGO WINSTA MIDI Cables	
Code	Description	Code	Description
I1W	5x2,5mm ² , 1m	I1W DA	5x2,5mm ² , 1m DA
I2W	5x2,5mm ² , 2m	I2W DA	5x2,5mm ² , 2m DA
I3W	5x2,5mm ² , 3m	I3W DA	5x2,5mm ² , 3m DA
I4W	5x2,5mm ² , 4m	I4W DA	5x2,5mm ² , 4m DA
I5W	5x2,5mm ² , 5m	I5W DA	5x2,5mm ² , 5m DA
I6W	5x2,5mm ² , 6m	I6W DA	5x2,5mm ² , 6m DA
I8W	5x2,5mm ² , 8m	I8W DA	5x2,5mm ² , 8m DA
I1W HF	5x2,5mm ² , 1m HF	I1W HFDA	5x2,5mm ² , 1m HFDA
I2W HF	5x2,5mm ² , 2m HF	I2W HFDA	5x2,5mm ² , 2m HFDA
I3W HF	5x2,5mm ² , 3m HF	I3W HFDA	5x2,5mm ² , 3m HFDA
I4W HF	5x2,5mm ² , 4m HF	I4W HFDA	5x2,5mm ² , 4m HFDA
I5W HF	5x2,5mm ² , 5m HF	I5W HFDA	5x2,5mm ² , 5m HFDA
I6W HF	5x2,5mm ² , 6m HF	I6W HFDA	5x2,5mm ² , 6m HFDA
I8W HF	5x2,5mm ² , 8m HF	I8W HFDA	5x2,5mm ² , 8m HFDA

CABLES	
Code	Description
I2	3x1,5mm ² , 2m PVC
I4	3x1,5mm ² , 4m PVC
I6	3X1,5mm ² , 6m PVC
I2 DA	5X1,5mm ² , 2m PVC
I4 DA	5X1,5mm ² , 4m PVC
I6 DA	5X1,5mm ² , 6m PVC
I2 HF	3x1,5mm ² , 2m HF
I4 HF	3x1,5mm ² , 4m HF
I6 HF	3X1,5mm ² , 6m HF
I2 HFDA	5X1,5mm ² , 2m HF
I4 HFDA	5X1,5mm ² , 4m HF
I6 HFDA	5X1,5mm ² , 6m HF

Saatavilla olevat mitat:
 Available lengths:

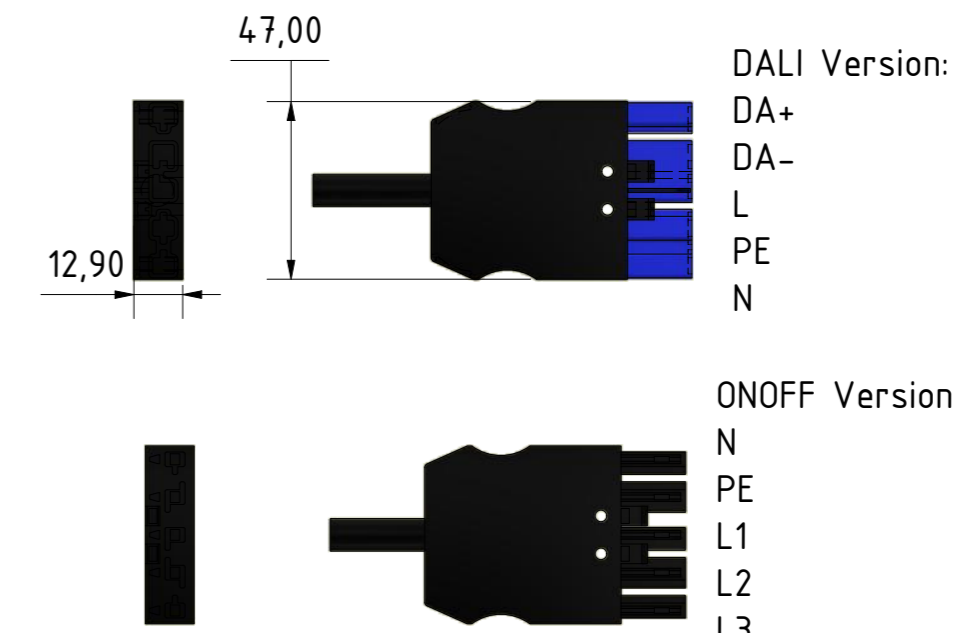
Liitoskaapeli:
 Connection cable:



Esimerkkejä kaapelivalinnoista:
 Examples of cable codes:
 I2 (Cable 3x1,5mm², 2m H05VV-F, PVC)
 I4 DA (Cable 5x1,5mm², 4m H05VV-F, DALI, PVC)
 I4 HFDA (Cable 5x1,5mm², 4m H05Z1Z1-F, halogen free, DALI)

Cable insulation options	Code
MSK / PVC / H05VV-F	
MSK / PVC / H05VV-F	DA
MSK / HF / H05Z1Z1-F	HF/HFDA

Wago pistoliitinkaapeli (IP20):
 Wago connenction cable, Plug (IP20):



WAGO Winsta Midi 771 MALE connector

Wago cable insulation options	Code
MSK / PVC / H05VV-F 5G2.5	
MSK / PVC / H05VV-F 5G2.5	DA
MSK / HF / H05Z1Z1-F 5G2.5	HF / HFDA

Esimerkkejä Wago kaapelivalinnoista:
 Examples of Wago cable codes:
 I2W DA (WAGO Dali Cable 2m, H05VV-F 5G2.5, PVC)
 I4W HFDA (WAGO Dali Cable 4m, H05Z1Z1-F 5G2.5, halogen-free)
 I6W DA (WAGO Cable 6m, H05VV-F 5G2.5, PVC)